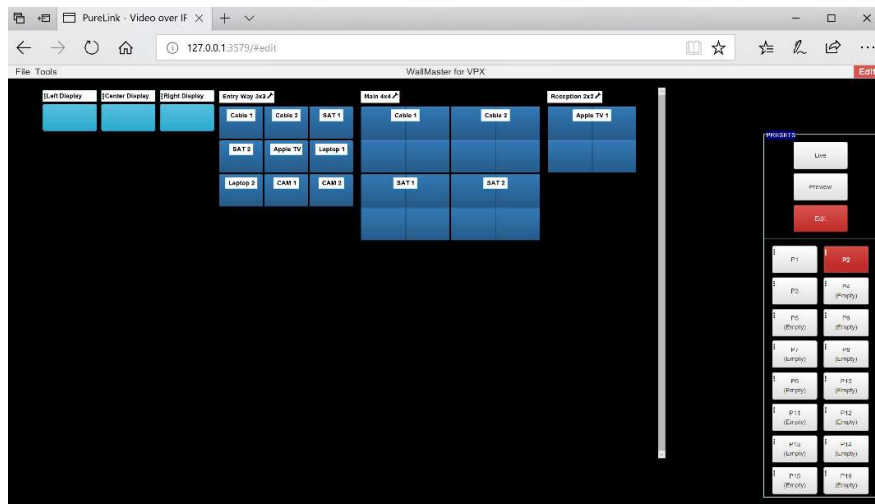


PureLink

User Manual

VPX 2.0

IP Video Management Software



Video over IP Solutions Management Software

PureLink™
535 East Crescent Avenue
Ramsey, NJ 07446
USA

Contents

Overview	4
Compatibility	4
Setting Your Computer to Communicate With VIP Devices Prior To Running VPX	5
VIP Hardware IP address methods	5
Installation and basic instructions.....	7
Loading or Creating a VIP Configuration	9
Selecting LAN Port To Scan:.....	12
The Auto Scan Process:	12
Live, Preview, and Edit Modes.....	14
Live	14
Preview.....	14
Edit	14
Color Coding of Buttons:.....	15
The Main Page.....	16
File Management Menu	16
Open or Create Configuration.....	16
Save Configuration As	16
Close Configuration.....	16
Quit	16
Tools Menu	17
Device Management	18
Manage Passwords	18
External Control	19
Event Log.....	21
Exit Installer Access.....	22
About	22
Creating Presets.....	23
Scheduling Presets.....	27
Dynamic Diagnostics.....	29
29	
Device Management Page	30
Left Window	30
31	

Right Window – Auto and Manual Management of Devices 31

VIP300H-U Specific Device Management Tools 32

 Videowall Setup Page (VIP300H-U Only) 33

Setting the VPX host computer to an IP address 6

Overview

The VPX IP Video Solutions Management Software provides comprehensive and complete setup and operation of PureStream VIP 200 and 300 series transmitters and receivers, providing the easiest implementation in the industry.

Features:

- Browser based UI allowing access from multiple platforms, including wireless tablets.
- Automatic discovery of all transmitters and receivers on the network
- Automated creation of input/output map
- Presets provide preconfigured input/output assignments, and videowall layouts
- Presets allow automation/scheduling of execution
- Preset rotator: endless looping of selected presets
- Third party control API: external control by various control automation systems
- Live diagnostics and searchable event logs
- Live, Preview, and Edit views
- Undo, Redo
- Offline system design
- WallMaster option plugin: Provides creation of multiple videowalls, each with user created source zone/layouts

Compatibility

Application requirements:

- Windows 7 Pro or above
- 2 GB RAM
- 2.5 GHz CPU i3 to i7 processor
- 100 MB Hard drive space (not including user configurations)

PureLink recommends the VPX Commander control appliance, purpose built to manage VPX/VIP systems up to 100 x 100.

Browser requirements (Windows, MAC OS, iOS, Android)

- Google Chrome 52 or higher
- FireFox
- Safari
- Note : Windows Explorer is not supported

Setting Your Computer to Communicate With VIP Devices Prior To Running VPX

The computer where the VPX software resides must be successful in communicating with the VIP hardware in order to properly operate. There are simple steps to achieve communication:

- Know the IP addressing of the VIP devices
- Set the computer IP address to the same IP family as the VIP devices
- Test the communications with VIP built in web pages

VIP Hardware IP address methods

Your VIP devices support three type of IP addressing

Auto IP

DHCP

Static

Auto IP

This IP address method is the factory default mode for the VIP200 and VIP300H-U endpoints. The following IP subnet is used:

- IP address subnet 169.254.nnn.nnn
- Subnet mask 255.255.000.000

Setting the VPX host computer to an IP address

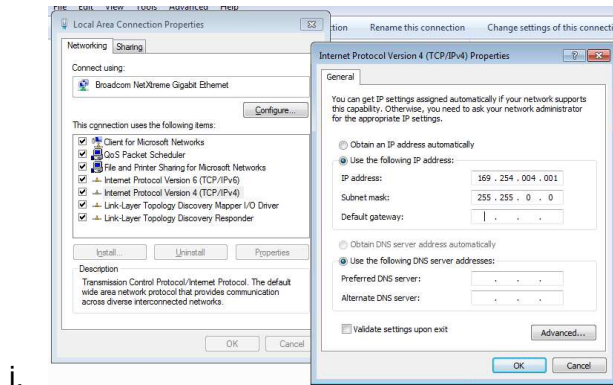
To communicate with VIP devices, VPX must be running on a Windows computer that is set to the same subnet, and a unique IP address.

Different versions of windows will have different user interfaces, however they all lead to the LAN adapter settings, where you will set your ipv4 IP address and subnet mask.

1) Set the LAN IP4v settings

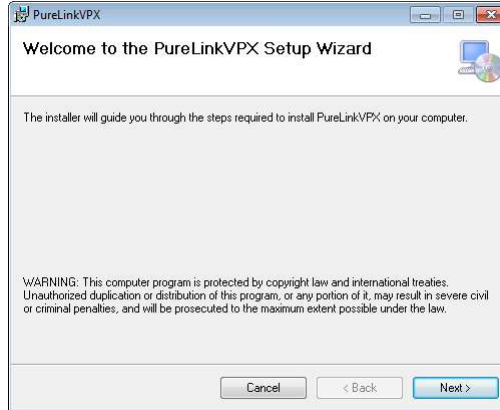
IP Address = same IP address subnet as VIP hardware, but different ending/suffix

Example: If your VIP hardware is set within addresses of 192.168.1.101 through 192.168.1.255, you would set your VPX host computer to an address between 192.168.1.1 and 192.168.1.100.

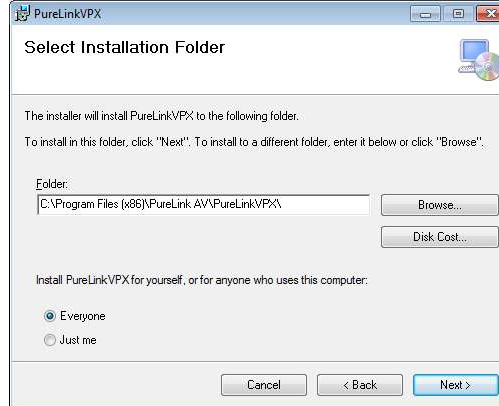


Installation and basic instructions

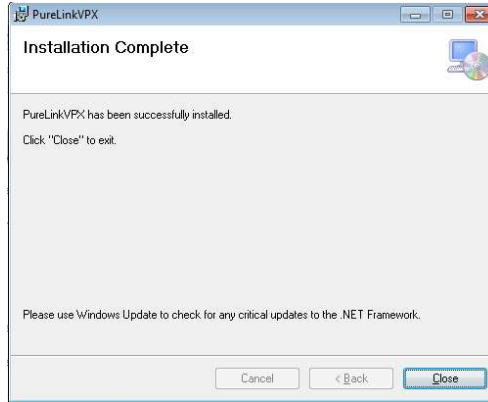
- The installation consists of two files:
 - PureLinkVPXInstaller.msi
 - Setup.exe
- Execute the setup.exe file



- Select folder location for program



- Select Finish

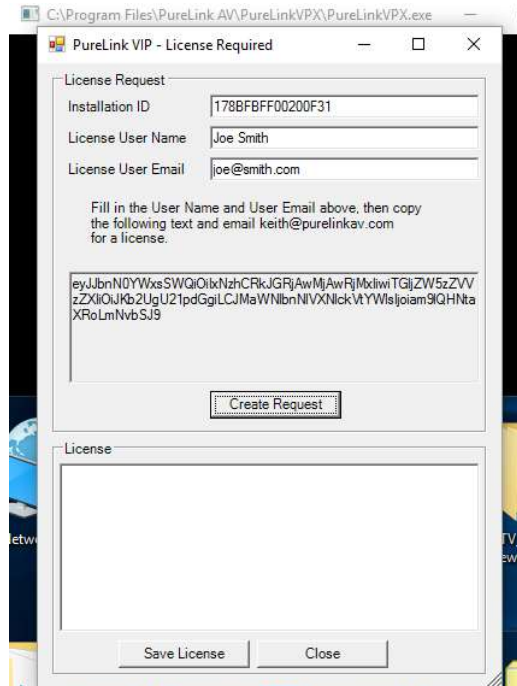


After you select Finish, you will find a shortcut on your desktop, “PureLink VPX”.



Start the program by double clicking on the shortcut

You will first see a black window appear for several seconds, then a registration window will pop up.



Fill in the License User Name and email address, and press “Create Request”. Copy and paste the code in the request area to an email, and send it to vplicense@purelinkav.com. You will receive a response

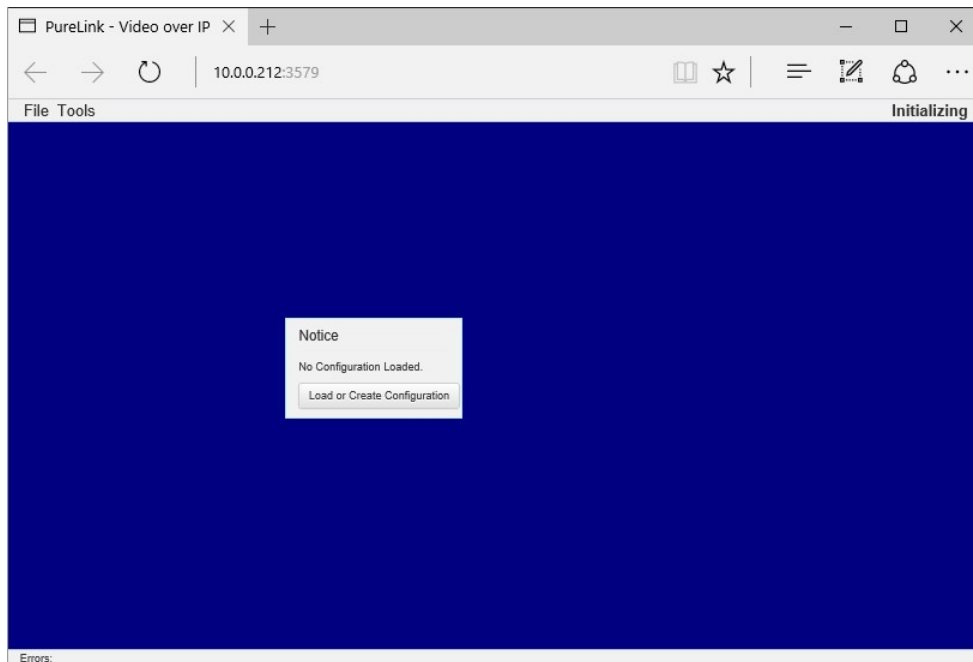
email with the License. Copy and paste the License code in to the lower License field and select “Save License”.

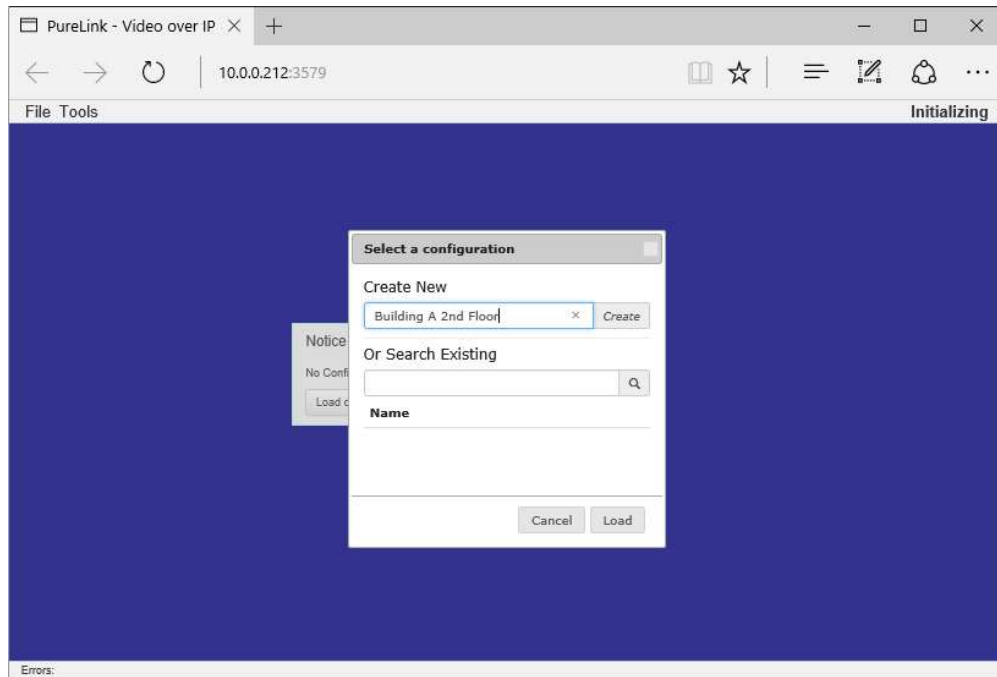
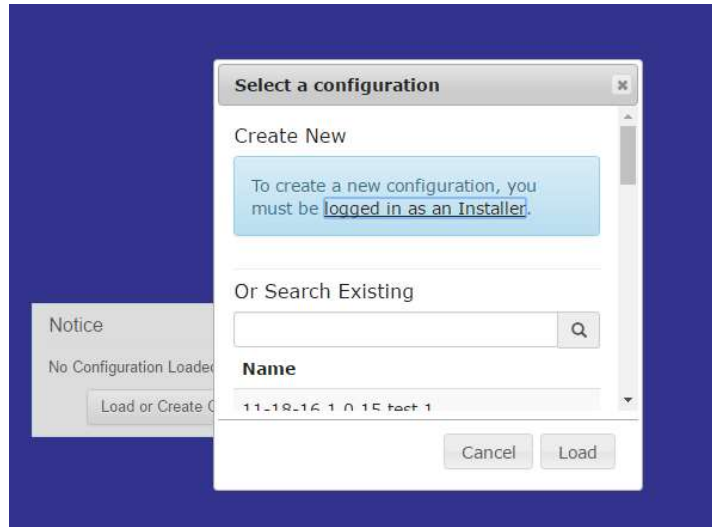
Once you have completed the licensing, your default browser will automatically open to the initial startup page. It is recommended to save the URL in your ‘favorites’ or ‘bookmarks’.

Note: Any revisions to the version of VPX you purchased will not require a new license.

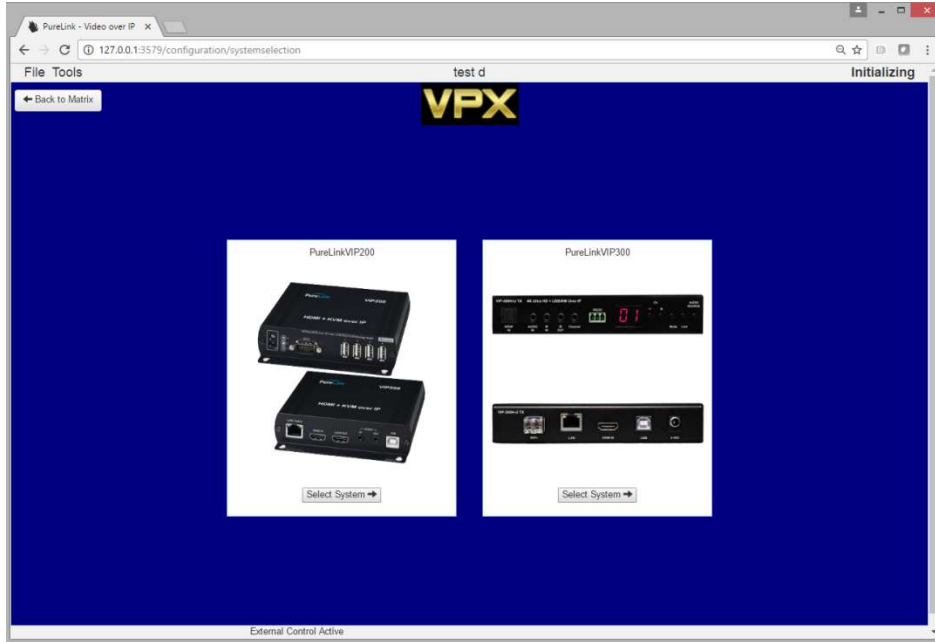
Loading or Creating a VIP Configuration

For the first startup, you will select the “Load or Create Configuration” button on the page. This will open a popup window allowing you to name your first project. If you select “Create” you may be asked for the installer password. The default installer password is VPX123.



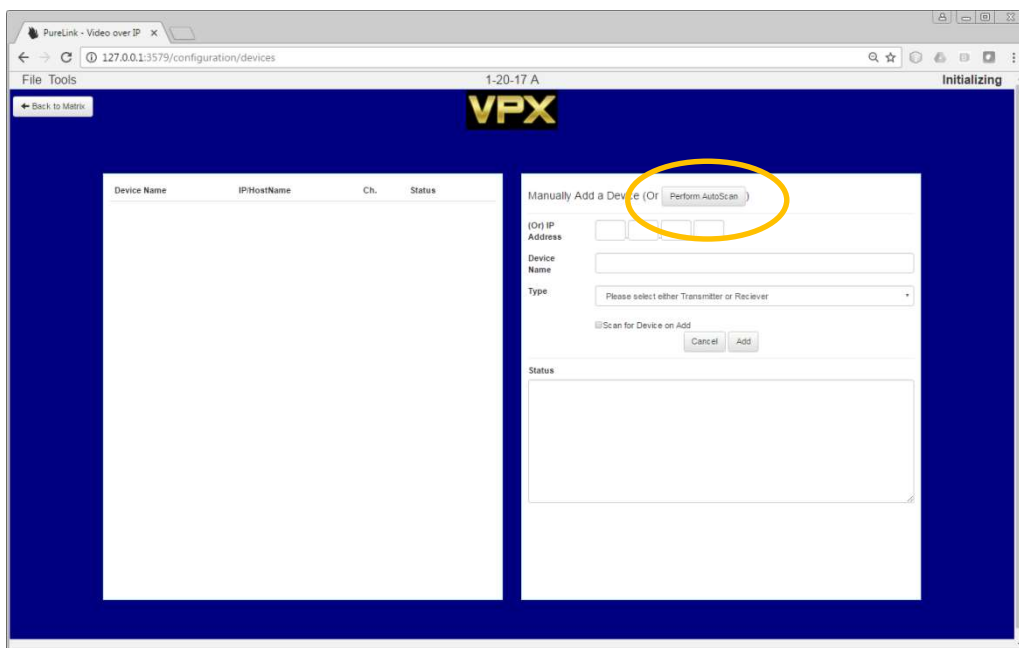


After you select your configuration file name, you will be asked to select from one of the VIP series of products to use in your system.



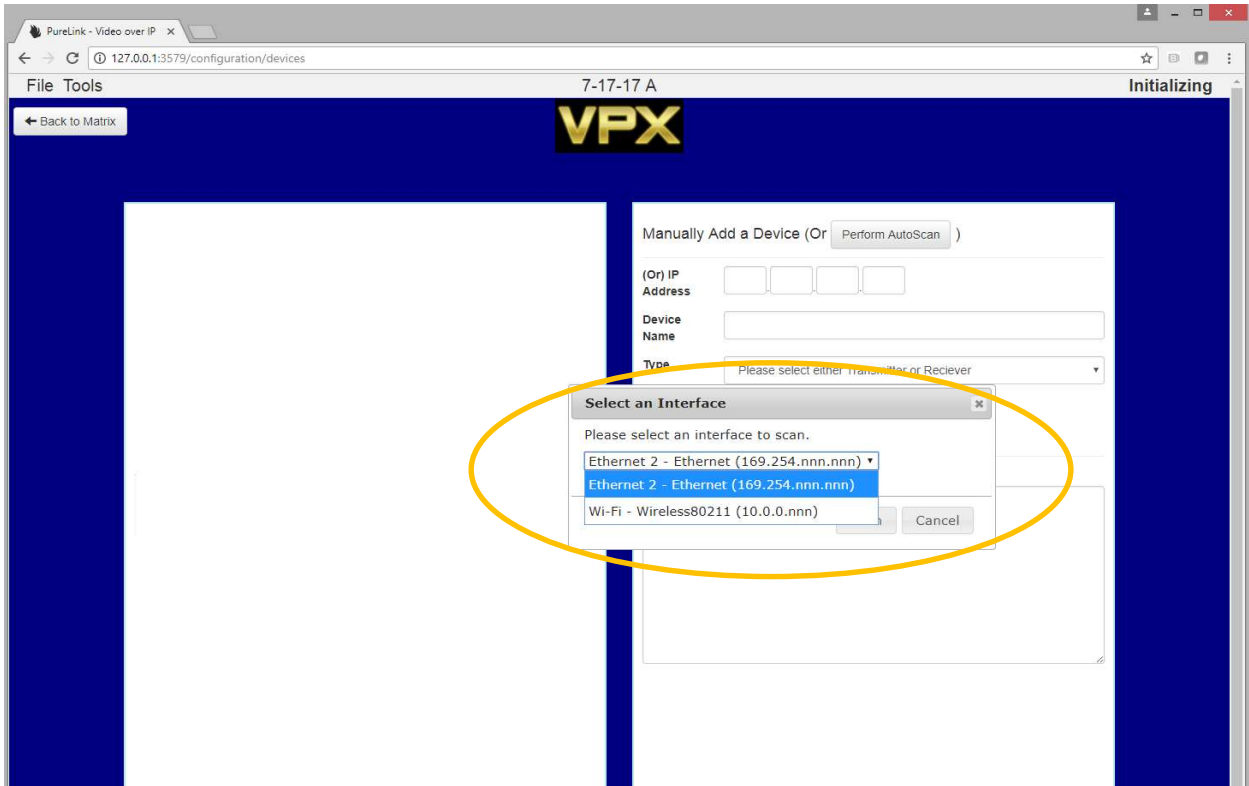
When you have selected which VIP series product you are designing for, the screen will change to the device configuration page, where the VPX program will allow you to scan for devices or manually add devices. It is important that the computer running the VPX software, and the VIP encoders and decoders are in the same IP family, and subnet. Otherwise, the VPX software will not detect the VIP hardware.

NOTE: If you are using VIP300 hardware, purchases after November 2017 are FW7 models. Please select FW7 if allowed to do so.



Selecting LAN Port To Scan:

When you press the Auto Scan button, it will ask you to identify which of your LAN connections you want to scan by selecting from a pull-down list.



The Auto Scan Process:

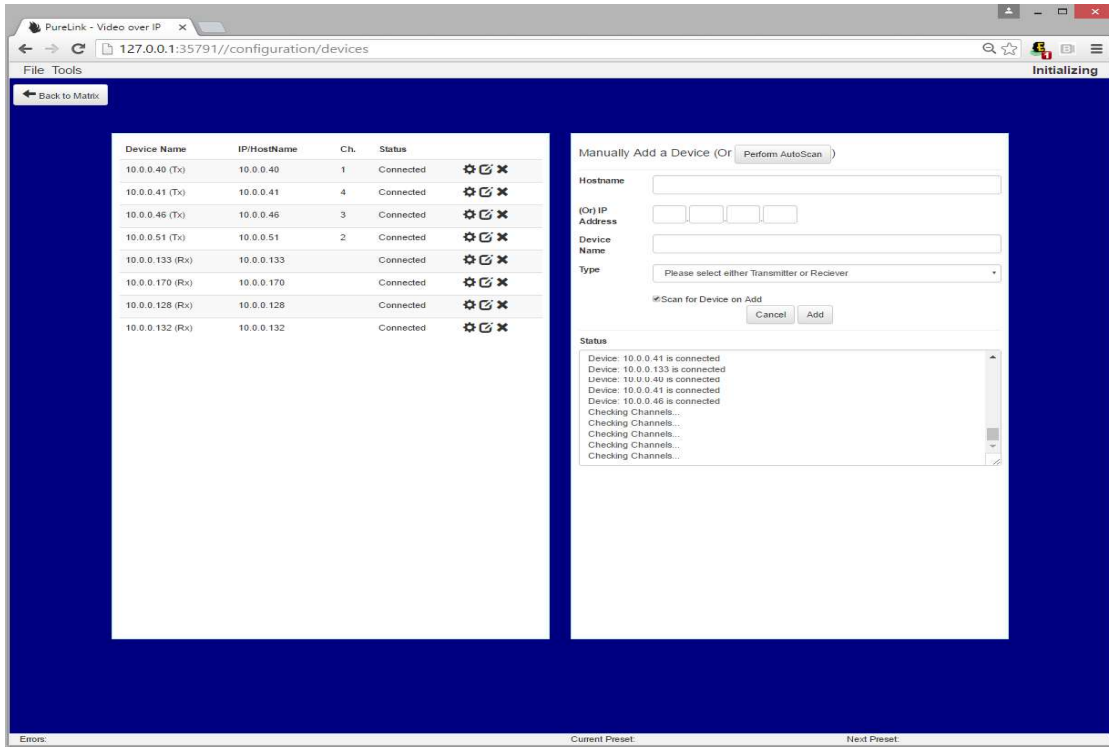
Once you select your LAN connection, VPX will begin to scan every address in your subnet for the previously selected VIP model.

If your subnet is 255.255.0.0, VPX will scan up to 65K addresses.

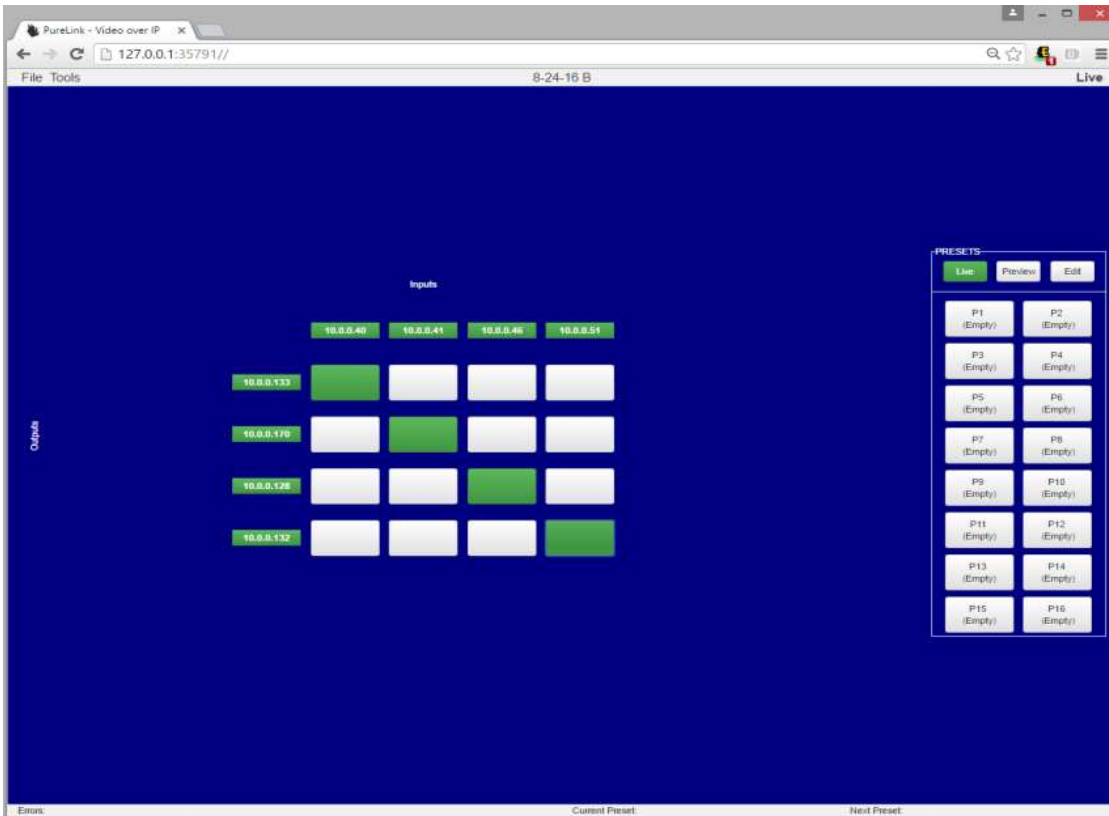
If your subnet is 255.255.255.0, VPX will scan 255 addresses.

When VPX has identified the VIP hardware, it will present the devices in the left window. You may stop the scan if you determine that all of the equipment is listed.

Once the VIP hardware is identified, VPX will continue to work for a minute or two to gather all parameters and settings of the VIP devices. You will see various activity going on after the discovery as it performs these operations. You may at any time go to the Matrix page.



The VPX program automatically creates your IO map.



Live, Preview, and Edit Modes

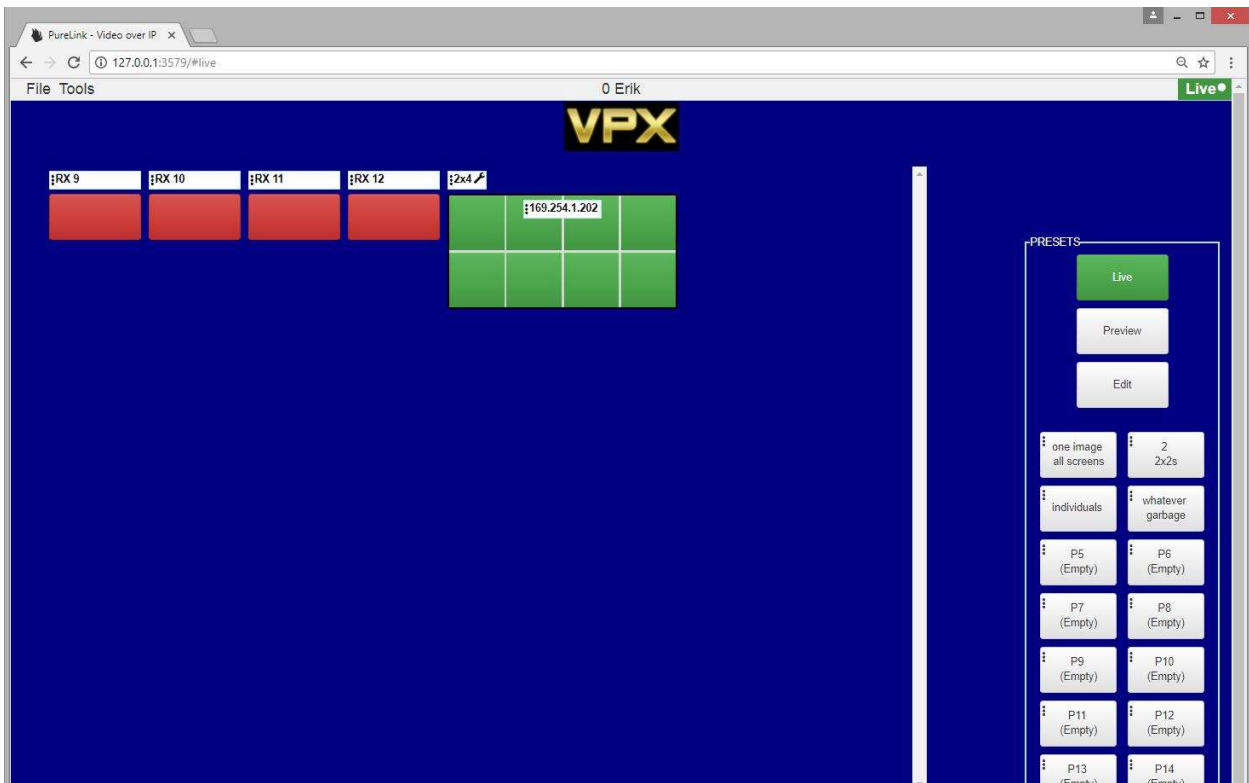
VPX provides three views, Live, Preview, and Edit.

Live – Provides real time changes to input/output assignments both on the matrix map, and using presets you create.

Preview – Allows you to preview the preset IO assignments

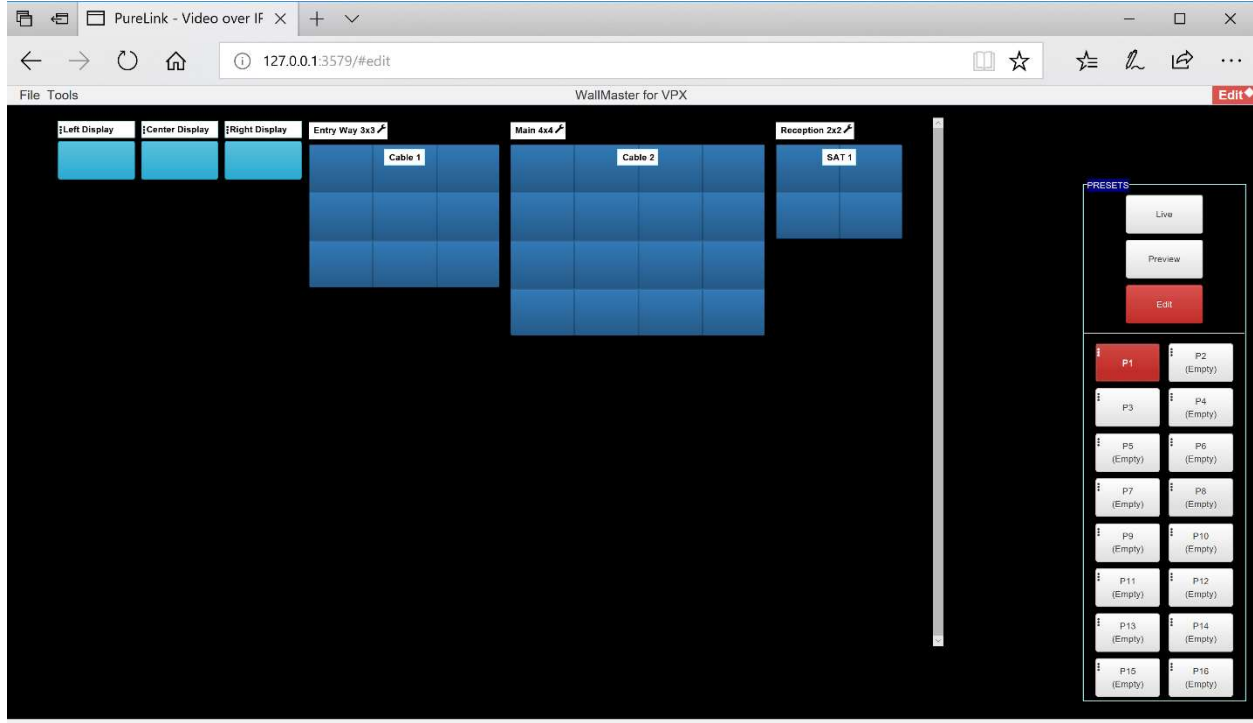
Edit – Allows you to

- Create Preset IO assignments
- Name/Rename Presets (2 fields, 12 characters each)
- Copy and Paste Preset IO assignments
- Set automation schedules for each preset



Live Mode

This example shows a video wall already made, however you must do this work in the Device Management section, under the Video Wall selection.



Edit Mode

Color Coding of Buttons above Preset section:

- Live Mode: Green
- Preview Mode: Orange
- Edit Mode: Red

The Main Page

File Management Menu

Open or Create Configuration: Displays a popup window allowing you to create a new configuration, or load an existing configuration.



Save Configuration As: Allows you to save a currently opened configuration file with a new name. Note: The previously named file will not be erased.

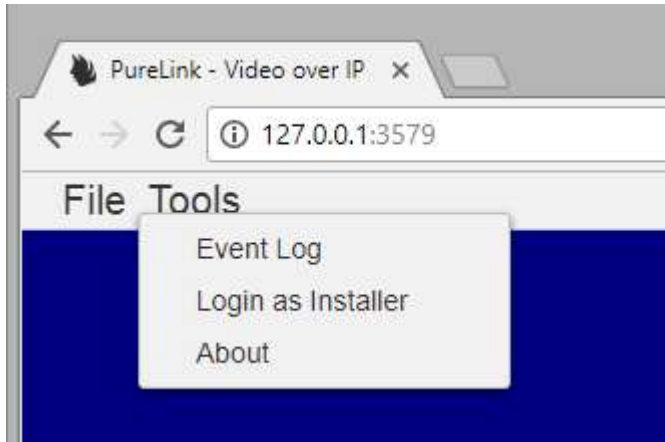
Close Configuration: Closes the current configuration file.

Quit: Ends the program

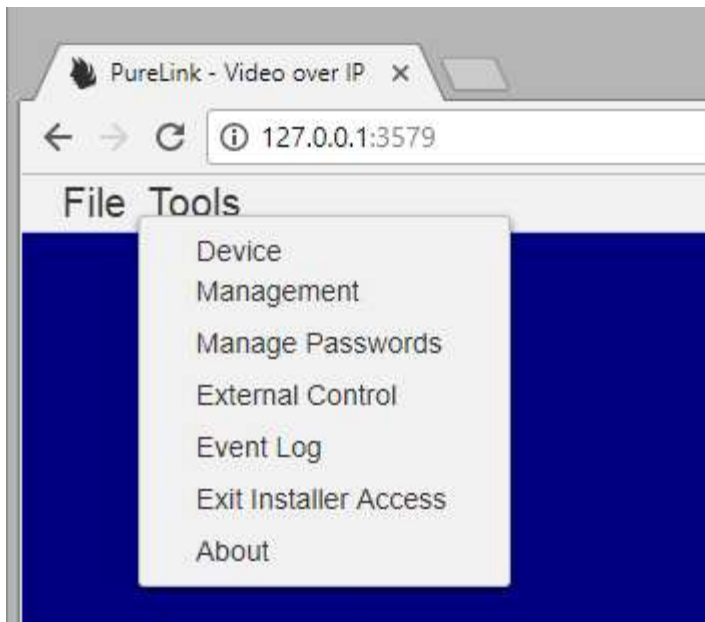
NOTE: Other than designing presets, all other parameters of your configuration file are saved automatically.

Tools Menu

When in User mode, the following Tools will be available:



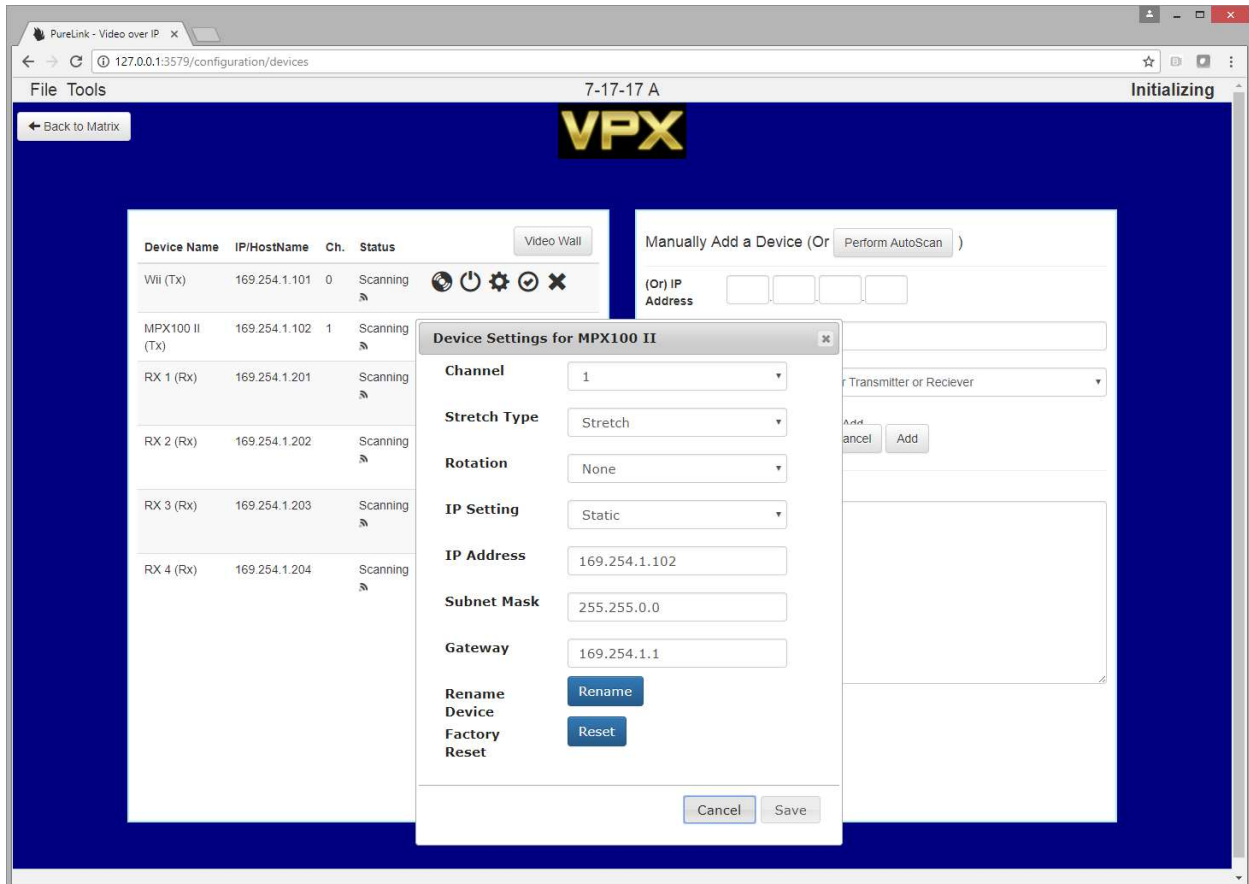
In Installer mode, the Tools menu will look as follows:



Device Management

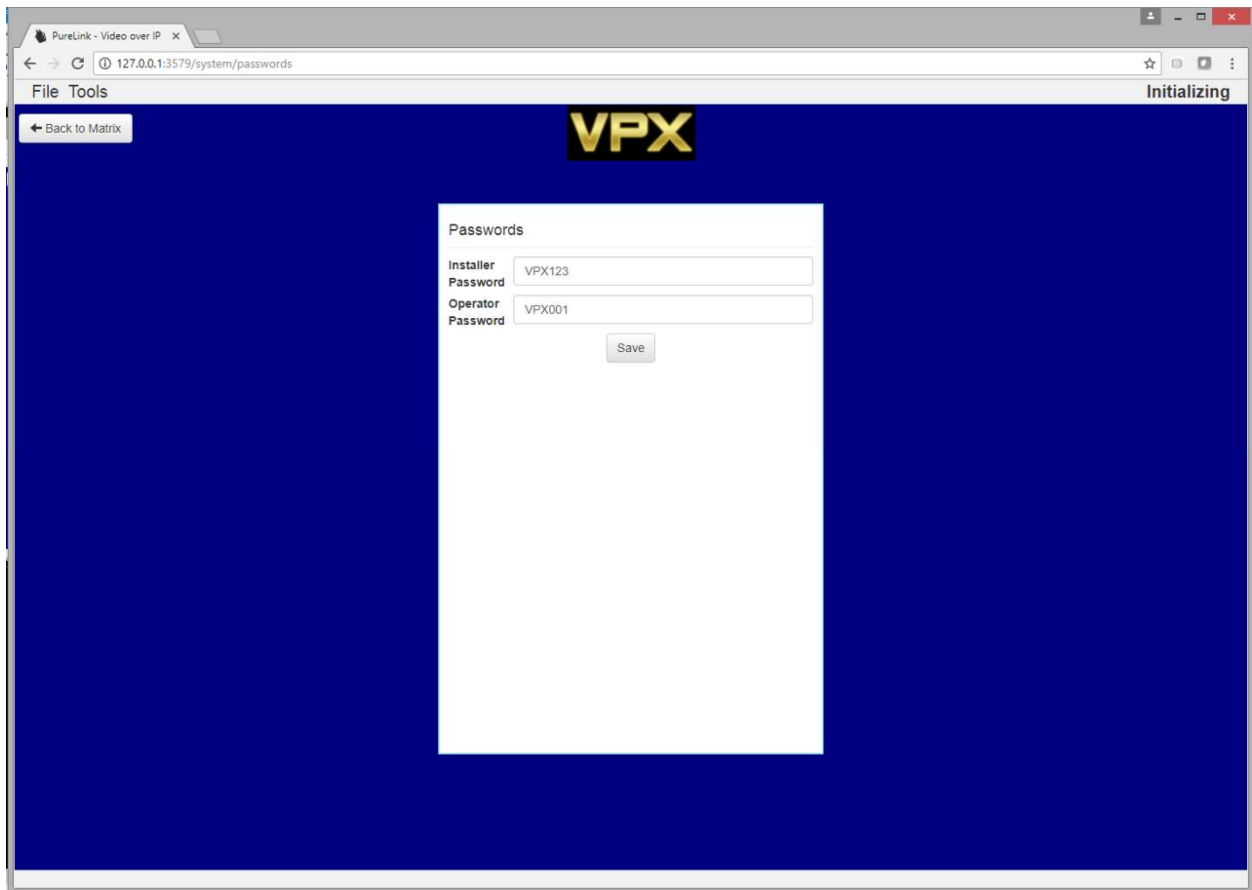
Functions:

- Auto Scan / Discovery of devices
- Manual Add of devices
- Hide / Show devices
- Detailed setup of devices
- Delete devices
- Locate devices
 - VIP200 – Blink LED on device
 - VIP300 – OSD of label and IP address



Manage Passwords

Allows installer to change installer and user passwords



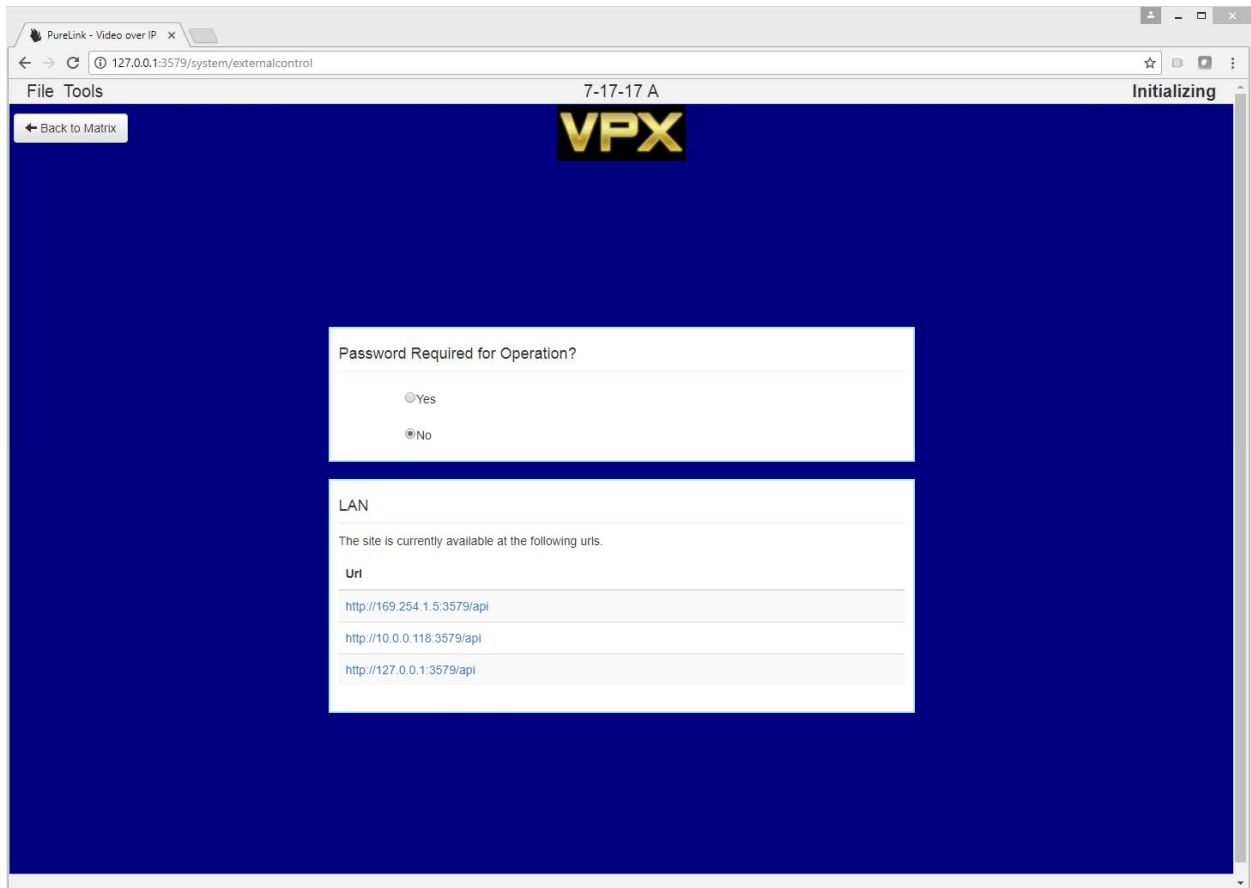
External Control

Allows third party control/access to VPX.

Functions:

- Get configuration file info
- Get presets info
- Get matrix info
- Call presets
- Set matrix IO

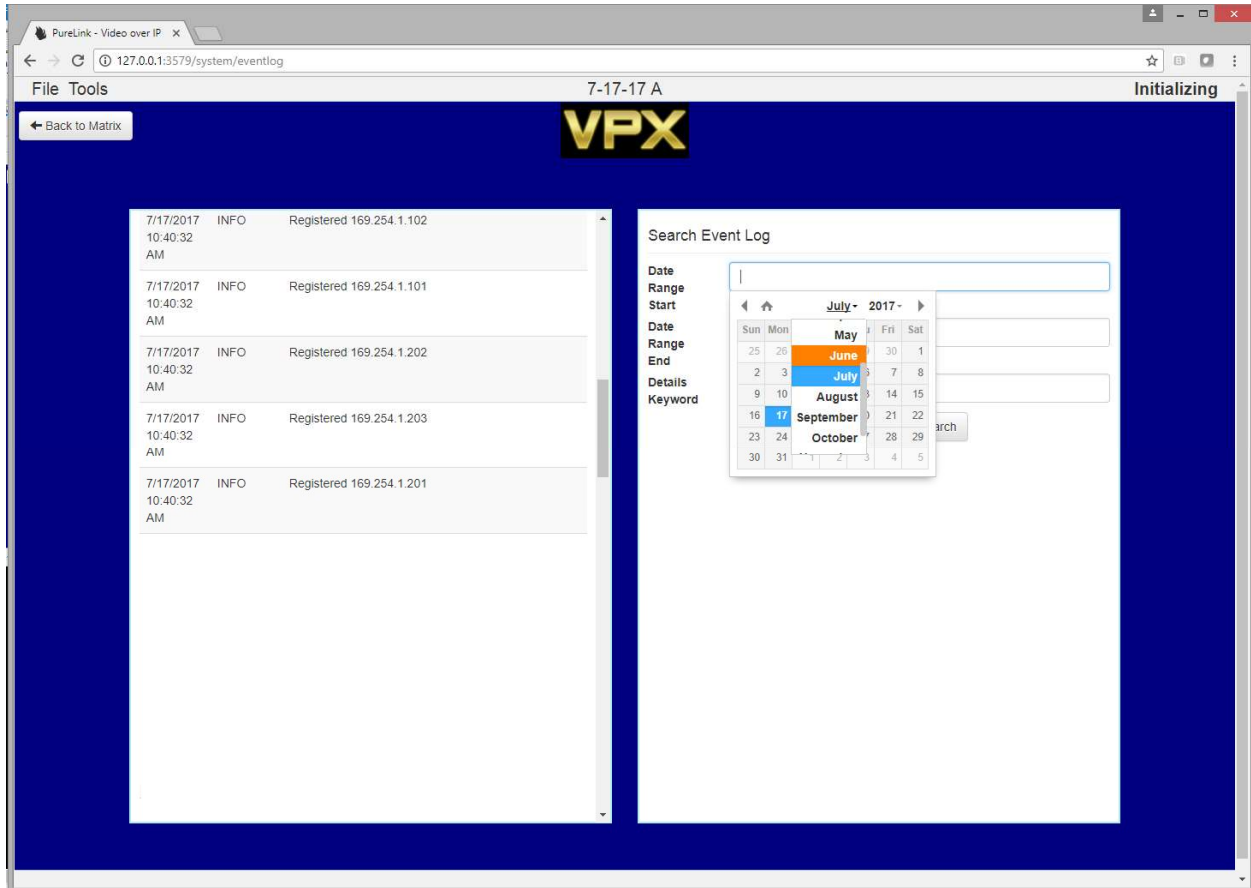
Password authentication can be set or disabled (default)



URL listings show urls that allow access to the program. Use these to access the UI from any computer on the network with a browser, such as iPad, Android, Mac, Windows, etc.

Event Log

Shows events that occur during registration and operation. Events can be time and keyword filtered, allowing you to narrow your search result to a specific device and/or a specific time range.

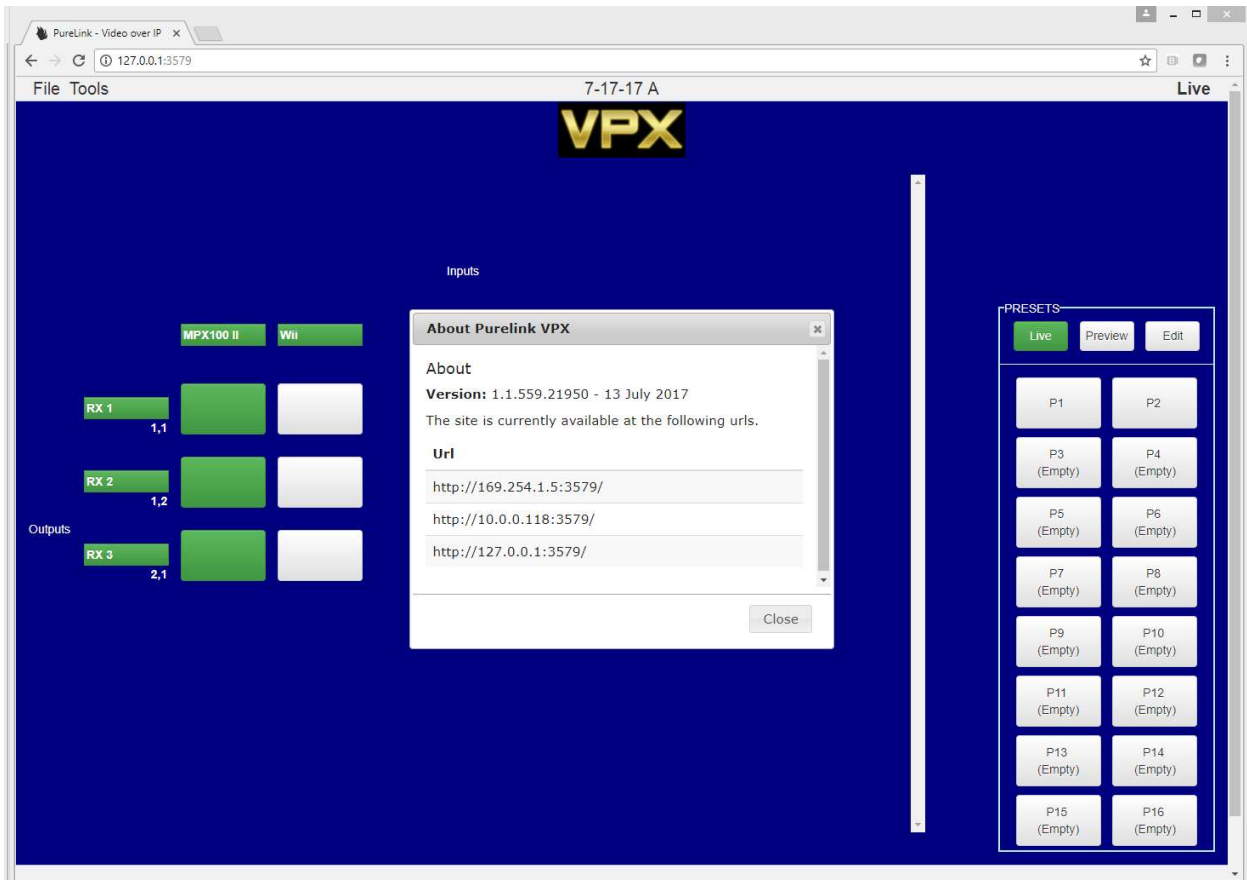


Exit Installer Access

Allows installer to exit out of setup functions directly in to user mode.

About

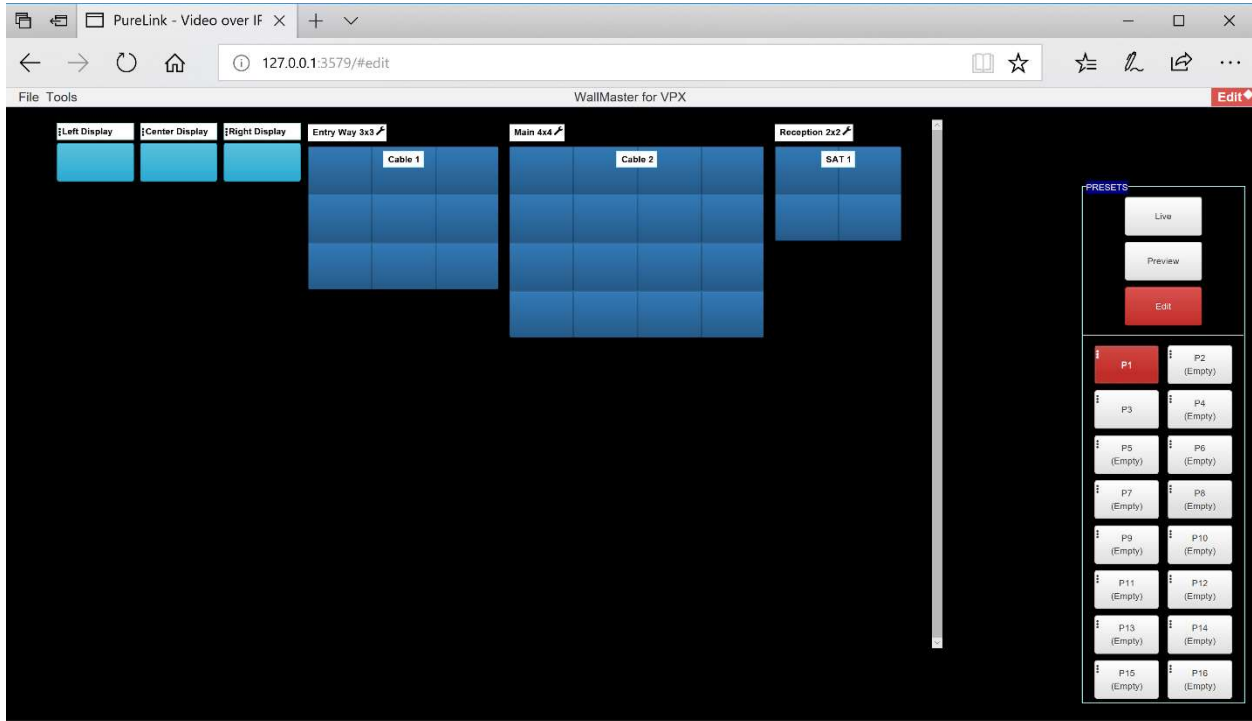
Provides version number, release date, and access URLs.



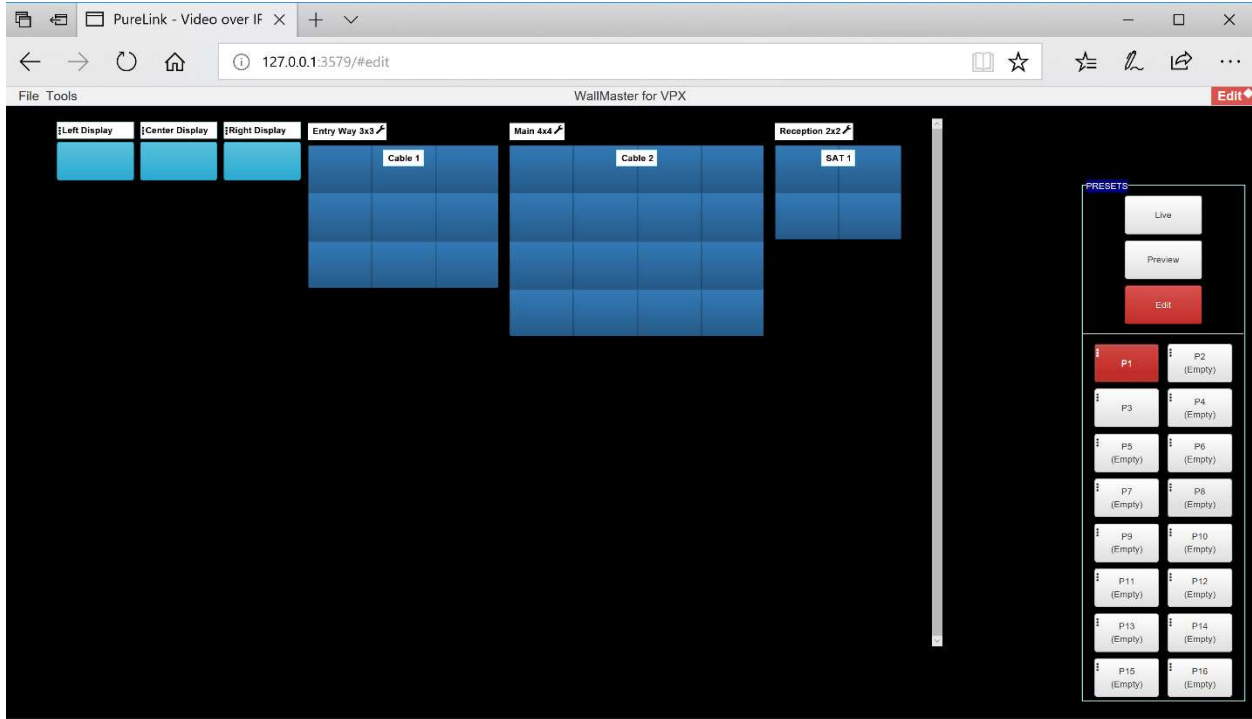
Creating Presets

Presets can be created when in Installer Mode

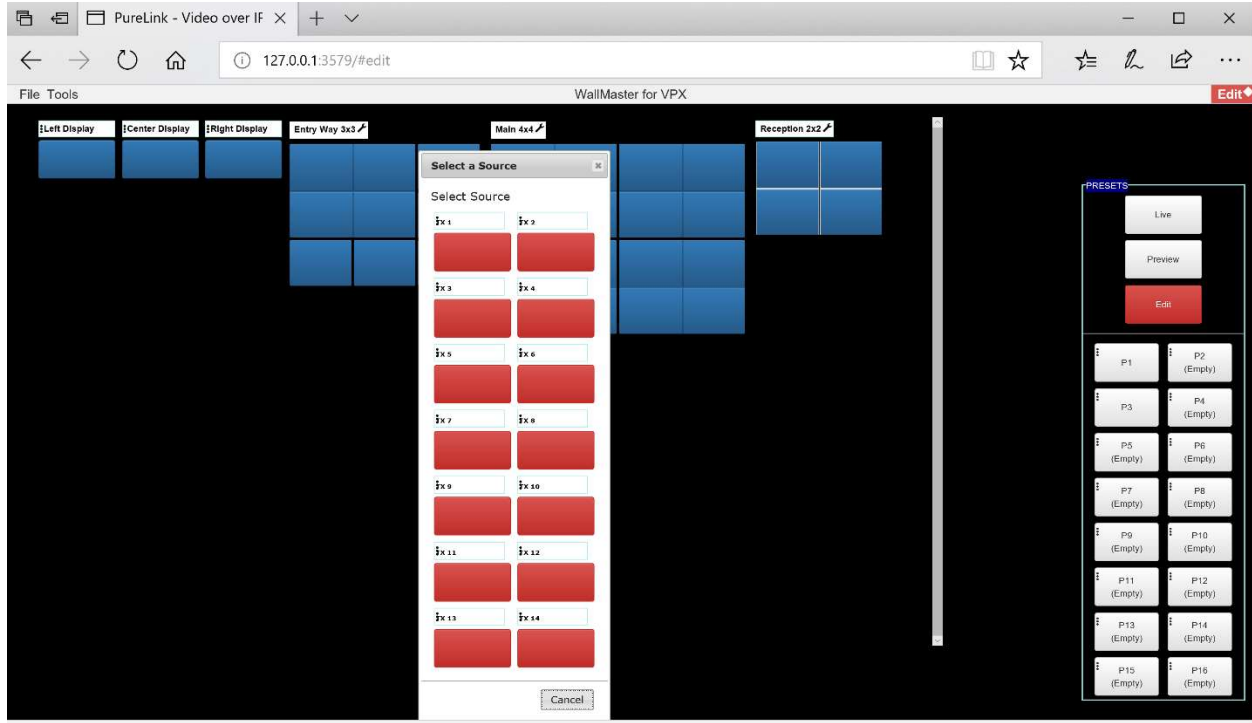
- Select Edit Mode



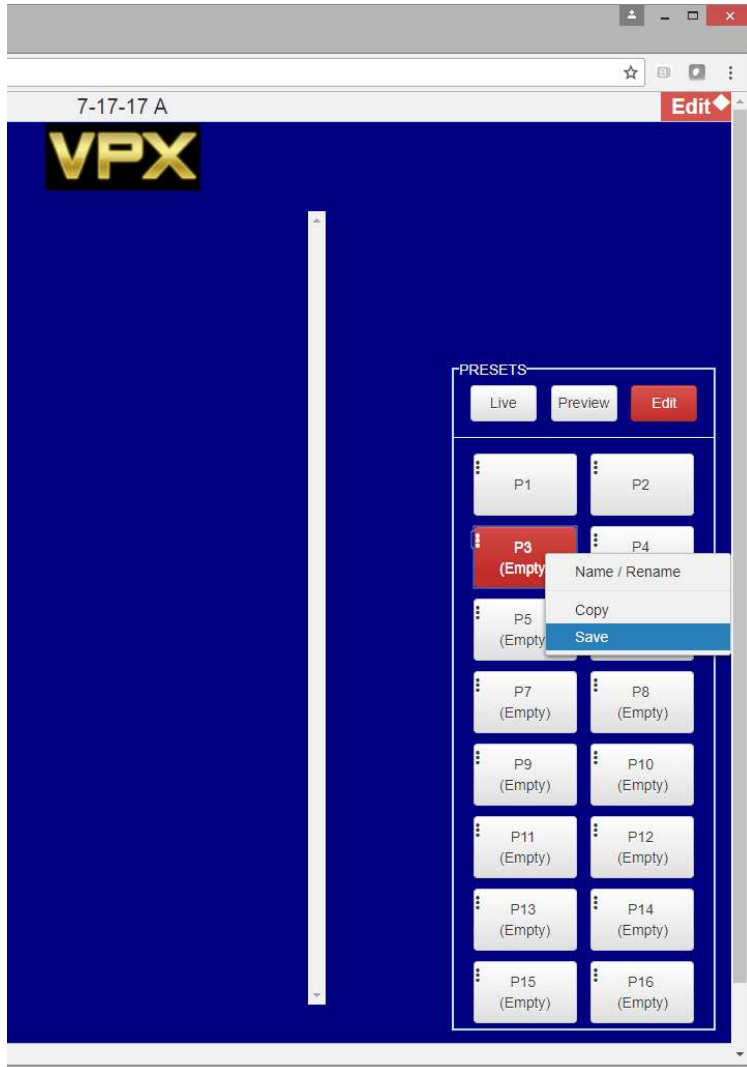
- Select a Preset



- Select IO assignments

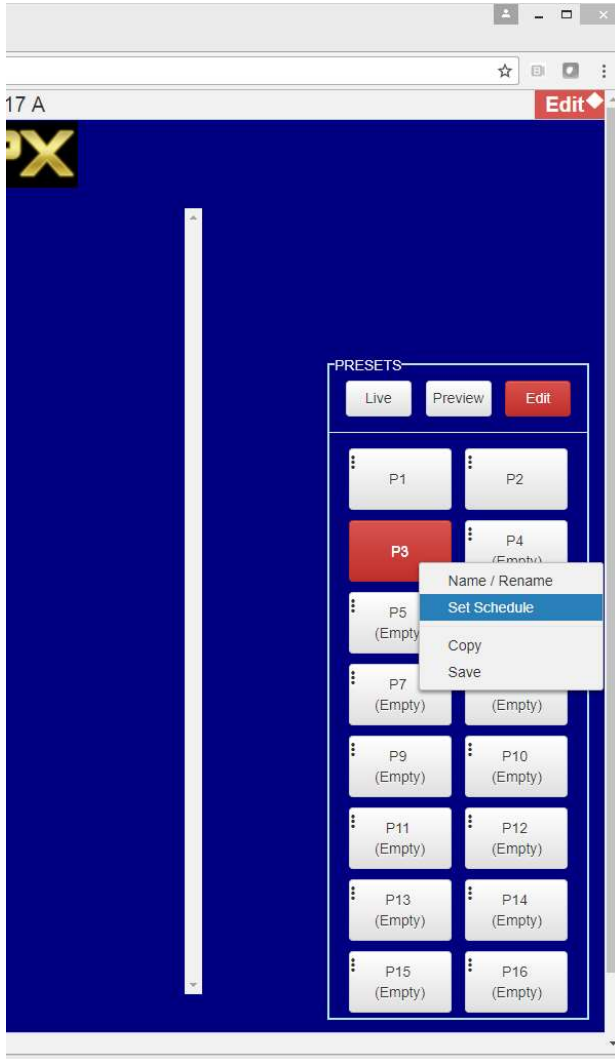


- Right Click on selected preset and choose Save

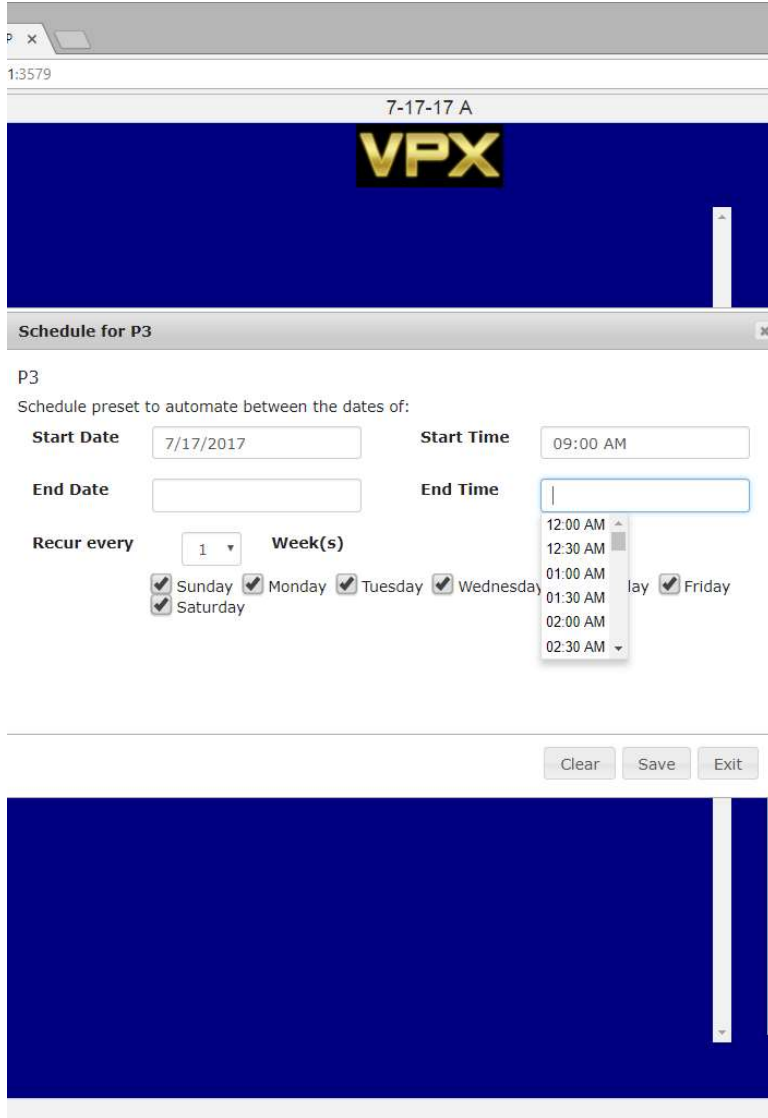


Scheduling Presets

Each preset can have its own automation schedule with or without and automation end date.
Automated presets can still be called manually.

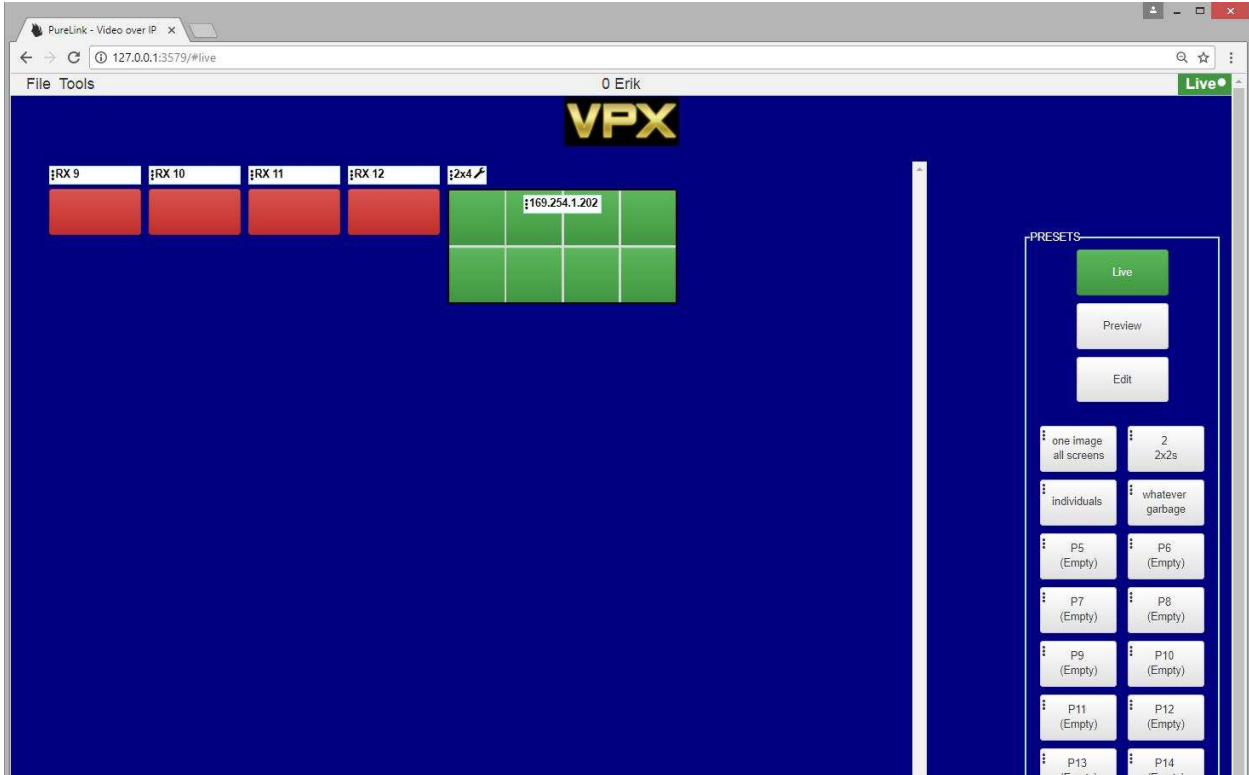


A popup window will allow you to select start date, execution time, end date (optional), end time (optional), days of the week to operate, and if you want execution every week, every other week, every three weeks, or every four weeks.



Dynamic Diagnostics




Input and Output labels provide system diagnostics. Every 15 seconds VPX checks communication to every transmitter and receiver on the network. If communications are successful, the input and output labels are 'colored' green. If any device does not respond, due to any possible cause of missed communication (cable, power, etc.), the label will turn orange. If any device is unable to communicate for over a minute and a half, the label will turn red, indicating there is an issue that needs to be addressed.






Device Management Page



Left Window

- Assigned Name of device and type (default value is device IP address)
 - Transmitters are listed first
- IP address of device
- Transmitting channel for TX only
- Status of detection
- Operational icons
 -  Blink LED of device for 30 seconds (VIP200 only)
 -  Reboot device
 -  Device settings
 - Transmitting channel for TX only
 - IP type setting
 - Rename device's assigned name
 - Reset device to factory defaults
 - Set image rotation (VIP300H-U only)
 - Set scaler (VIP300H-U only)

-  Show / Hide device from matrix page
-  Remove device
-  Assigned to videowall (VIP300H-U RX only)



Right Window – Auto and Manual Management of Devices

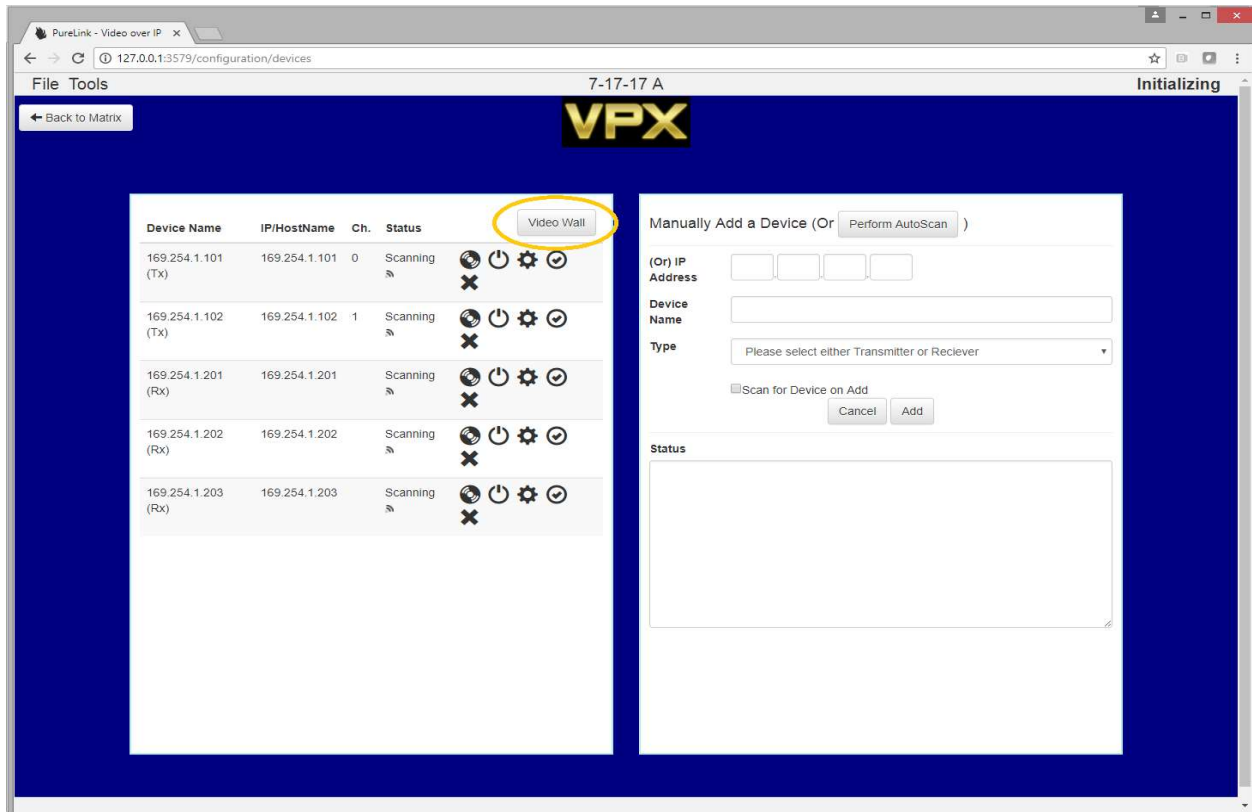
- Assigned Name of device and type
 - Transmitters are listed first
- IP address of device
- Transmitting channel for TX only
- Status of detection
- Operational icons
 - Blink LED of device for 30 seconds
 - Reboot device

- Device settings
 - Transmitting channel for TX only
 - IP type setting
 - Rename device's assigned name
 - Reset device to factory defaults

VIP300H-U Specific Device Management Tools

Because the VIP300H-U provides videowall and scaler functions, additional tools will appear when this model is selected.

The Video Wall Setup Page can be accessed by either pressing the Videowall button on the Device Management page, or pressing the Videowall icon next to a VIP300H-U RX assigned to the videowall.



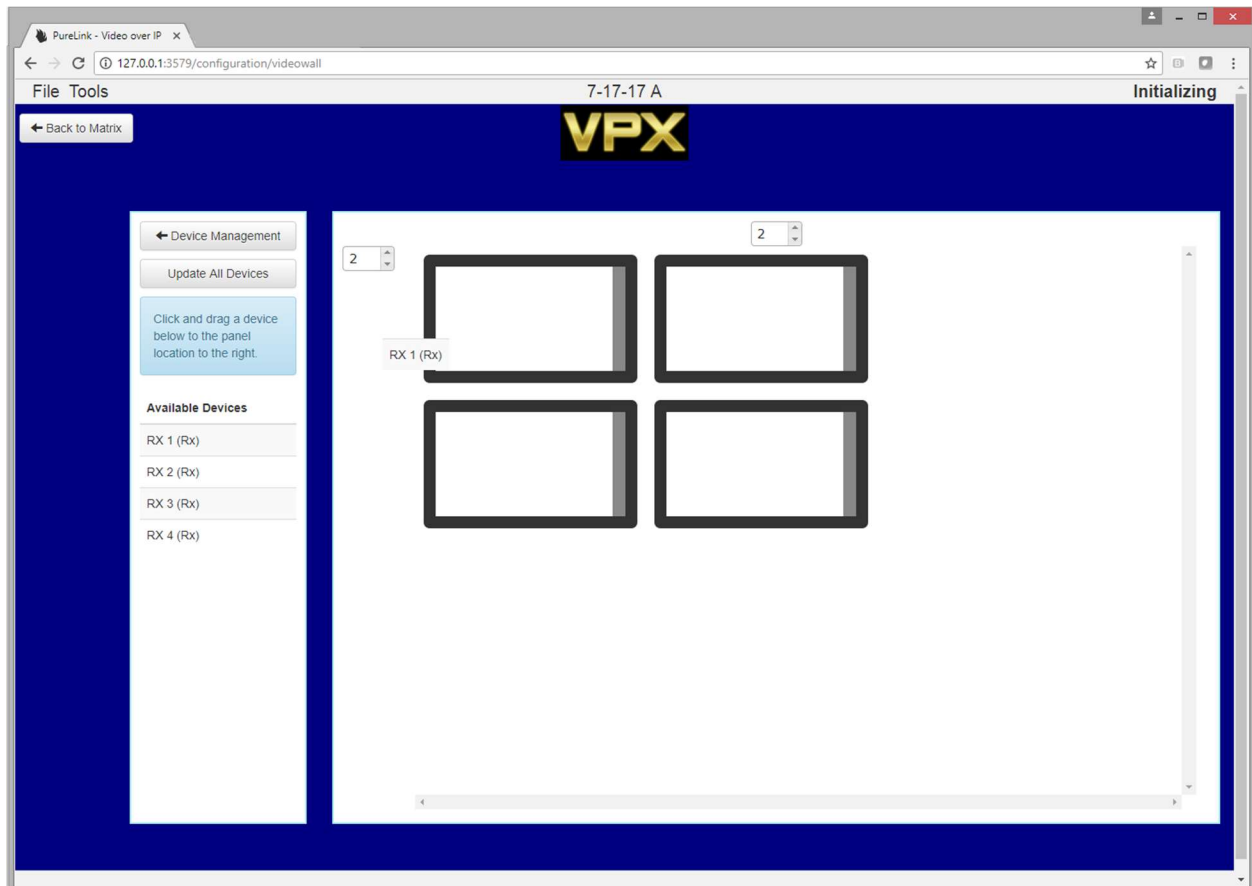
Videowall Setup Page (VIP300H-U Only)

The Videowall Setup Page provides two panes. The left pane allows navigation back to the Device Management page, an Update All Devices Button, and a list of all registered VIP300H-U receivers.

The right pane is where you create your videowall. The initial view shows a 1 row by 2 column array. You may increase these values up to eight rows and 8 columns.

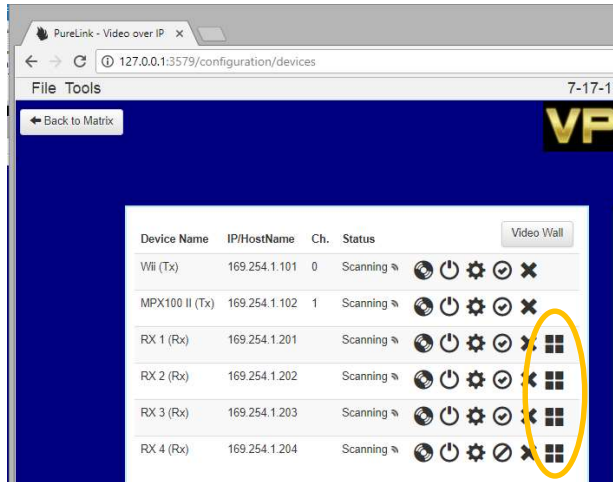
Create your videowall array correctly first before placing receivers.

Please place receivers by left click/hold and drag on to the panel you desire for its location. The receiver will automatically size/scale and position itself.





Once you have completed assigning VIP300H-U receivers to the videowall, the Device Management page will add a videowall icon next to those receivers that are part of it.



Receivers that are in the videowall will now be 'latched' together when switching an input. This allows you to select an input to only one output and VPX will switch all relative receivers.

For further information or support, please contact your PureLink dealer, or visit purelinkav.com

